

# retro

REPLACEMENT LED POOL LIGHT



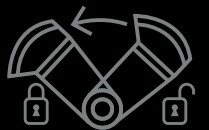
**SE Spa** Electrics

compatible with

**ALL 10"  
NICHES**



QUICK-CONNECT  
PLUG



PATENT-PENDING  
CAM-LOCK SYSTEM

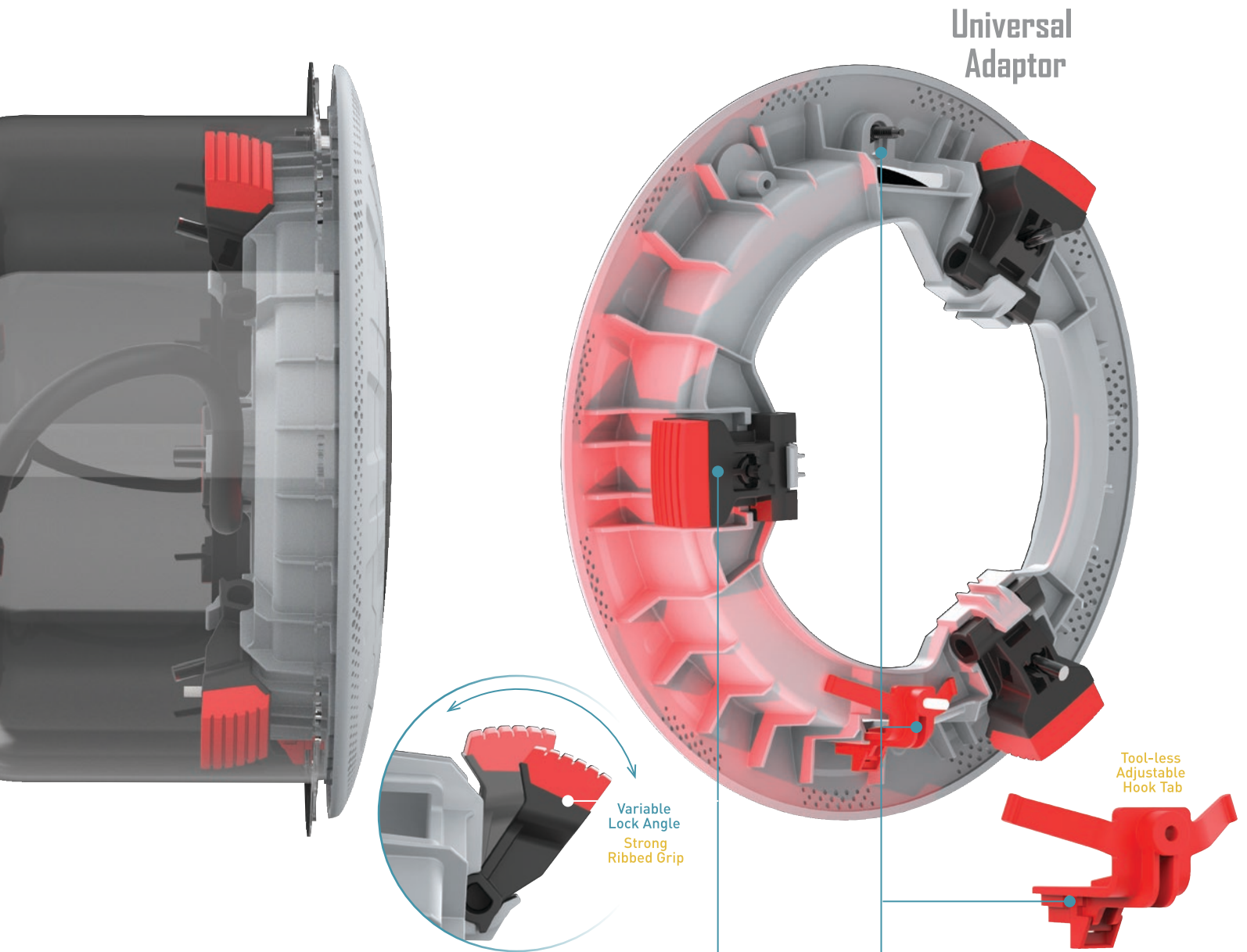
**SE Spa** Electrics®

# R10

UNIVERSAL 10" CONCRETE REPLACEMENT POOL LIGHT

# Designed by Builders for Builders

The only **Retro-Fit** light for 10" Niches you will ever need



## CAM-LOCK Installation

There's no need for expensive repair work, as Retro R10's Universal Adaptor doesn't rely on intact niche mounting hooks or screws for installation.

It's **patented CAM-LOCKS** grip the niche wall as they're fitted, pulling the light and niche together for a secure fit.

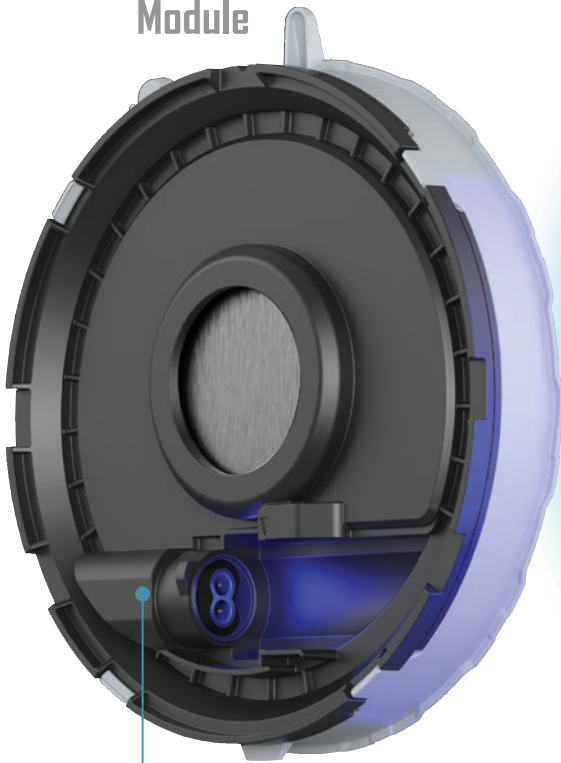
## Standard Installation

If the existing niche mounting hooks and screws are intact, Retro R10 supports standard installation via the HOOK TAB at the base and the front facing screw at top.

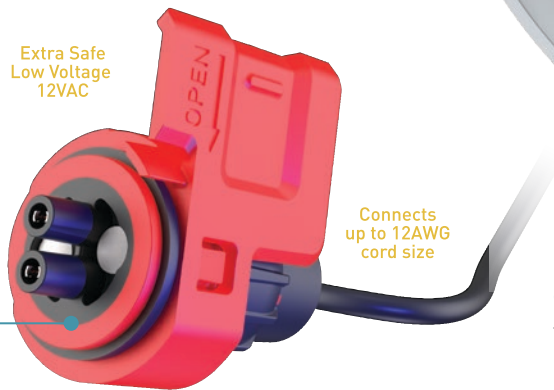
The **HOOK TAB** at the base adjusts to suit all major brand niche tabs, without the need for extra washers or spacers.

# R10

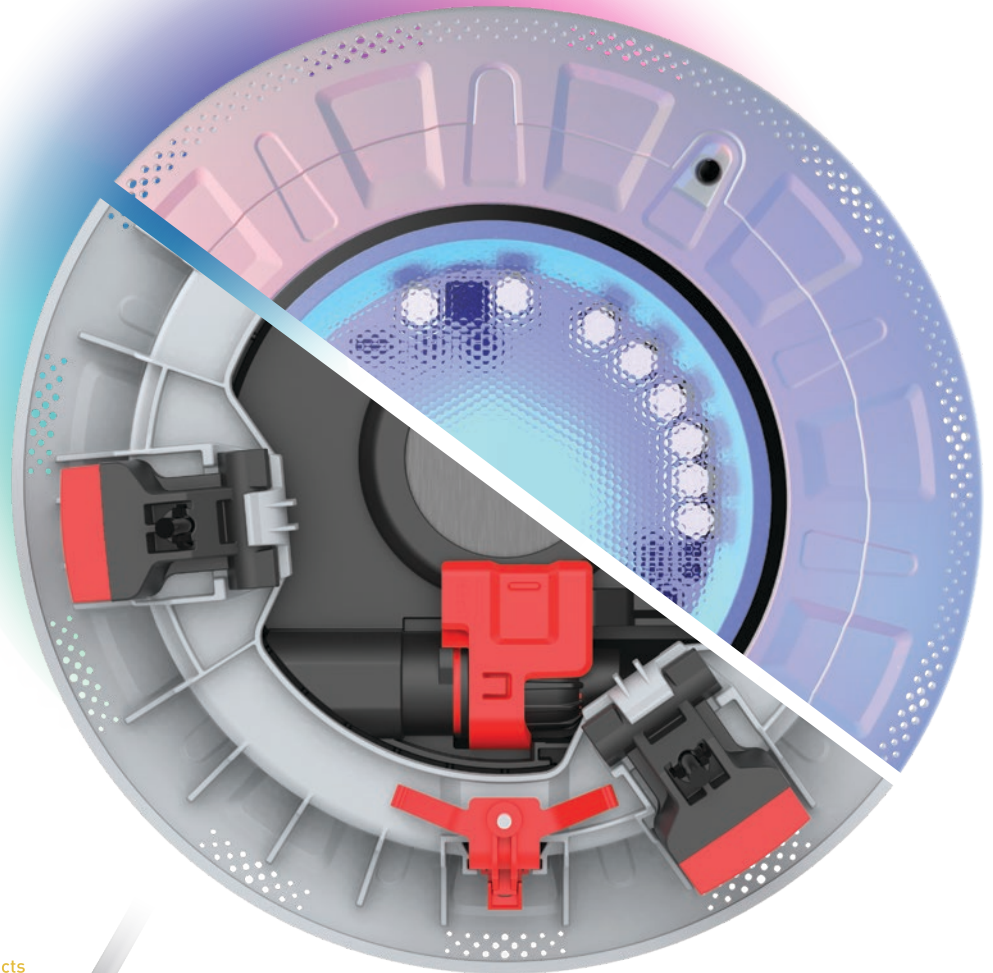
Light  
Module



Extra Safe  
Low Voltage  
12VAC



Connects  
up to 12AWG  
cord size



Retro R10 is the brightest LED retro-fit on the market with **over 3000 lumen** output.

The unique water cooled design harnesses the full cooling potential of your pools to maximize performance and extend product life. Retain the brilliance of a 300W halogen, while improving the look and safety of your pools with Retro R10.

## Quick Connect Plug

Say goodbye to changing cables forever with Retro R10's **Quick Connect Plug**.

Connecting to the existing pool light cable in the niche, the **UL Listed Quick Connect Plug** ensures fast and reliable installation while also enabling easier future servicing in the field.

**retro**

REPLACEMENT LED POOL LIGHT

# Compatibility

All major pool controller brands:  
IntelliTouch® Omnilogic® AQUALINK®

## All major brand niches:

- American®
- Anthony®
- CHD®
- Hayward®
- Hydrel®
- Jandy®
- PacFab®
- Paragon®
- Pentair®
- Purex®
- Sta-Rite®
- Swimquip®

# Secure Fit

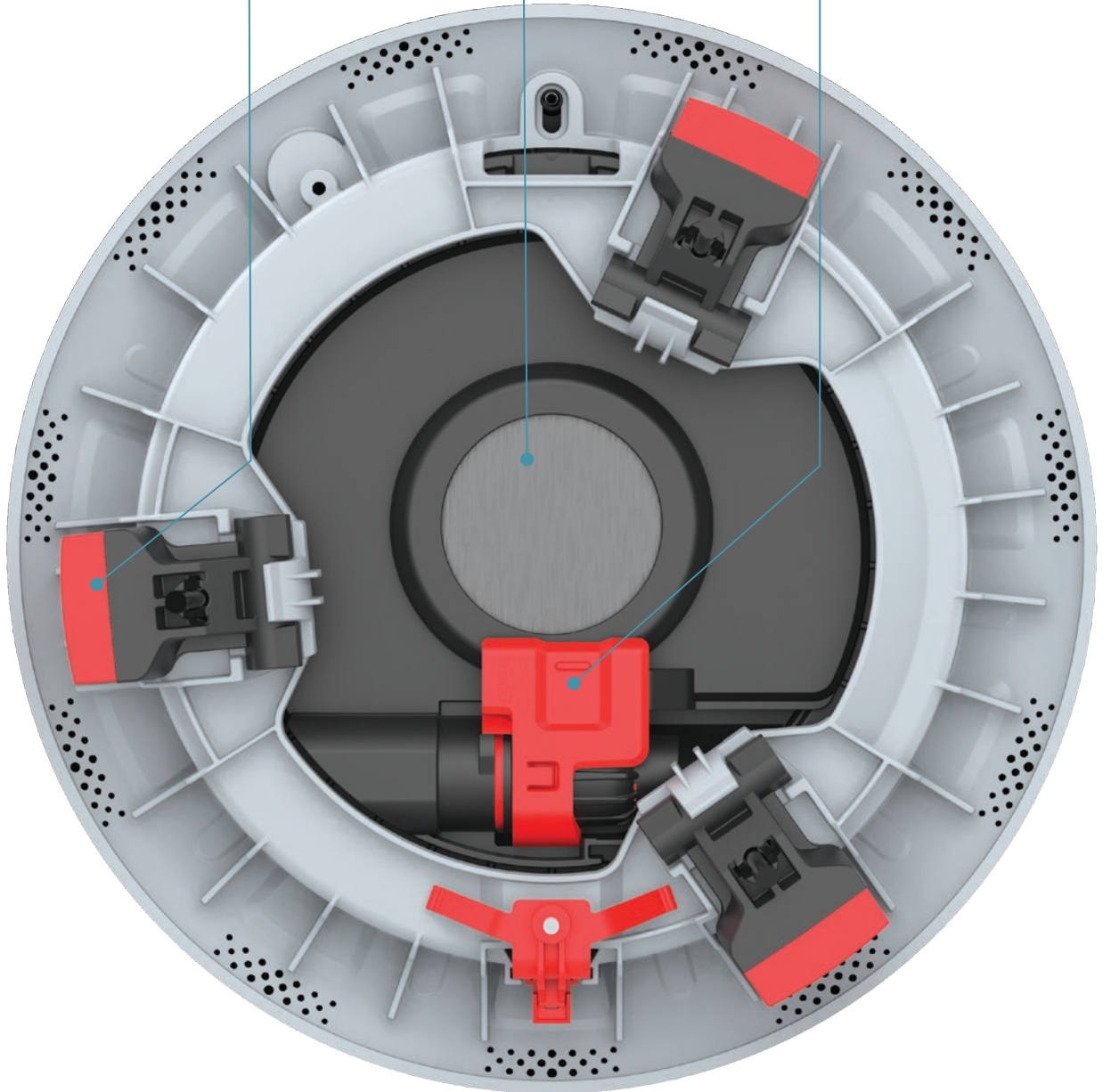
Universal Adaptor with  
Patented CAM-LOCKS

# Super Cool

Water-cooled system  
3000lm+ Brightness

# UL Listed

Simpler installation  
and servicing  
Quick Connect Plug



Product Specification	LED Color	LED Array	Wavelength	Lumens	Color Temp	
VOLTAGE:	10.5-13v AC	WHITE:	Warm	n/a	3200	3000k
WATTAGE:	45w	WHITE:	Daylight	n/a	3200	4000k
INGRESS PROTECTION:	IPX8	BLUE:	BLUE	465nm	1000	n/a
SUITABLE FOR:	10" Concrete Niches	MULTIPLUS:	RGB+W	Varies	3200	4000k
COMPATIBLE WITH:	Extra Safe Low Voltage LVX Series Transformers					

For more information on the **Retro R10** and our other products, please visit our website or contact our US Office:

**Toll Free:** 1800 708 5545  
**Email:** [info@spaelectronics.com](mailto:info@spaelectronics.com)  
**Web:** [www.spaelectronics.com](http://www.spaelectronics.com)

© Niche and Pool Controller brands mentioned remain copyright of respective manufacturers



[www.spaelectronics.com](http://www.spaelectronics.com) |   